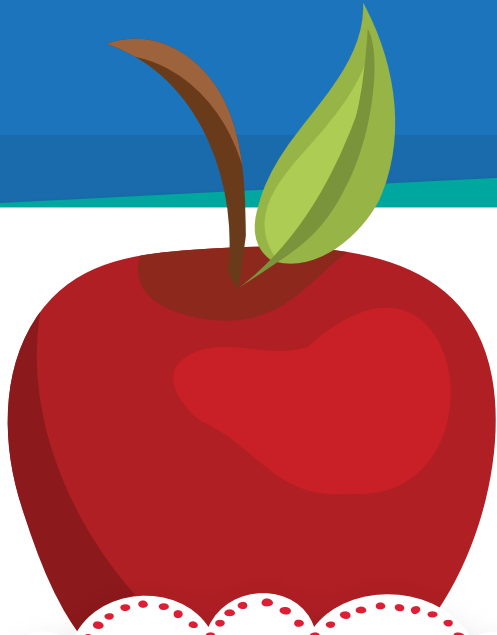


Sound It Out

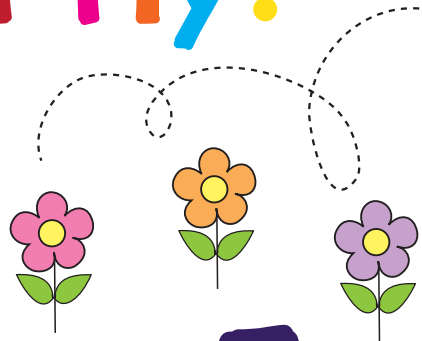
P
Preschool



a

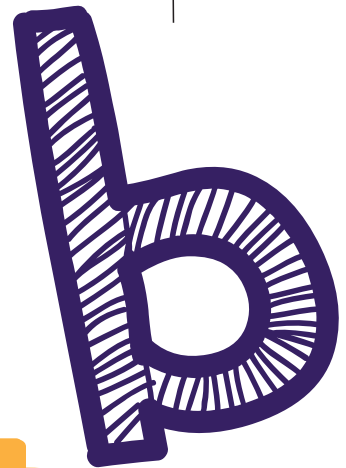


I fly.



I buzz.

Buzzzzzzzzzz



c

What
am I?

Table of Contents

Sound It Out

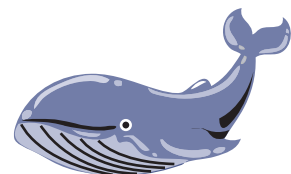
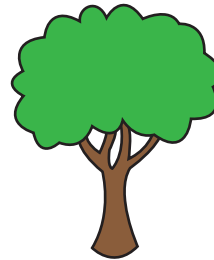
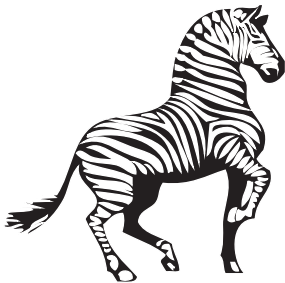
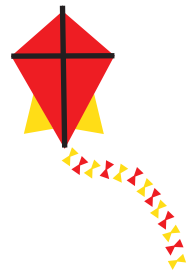
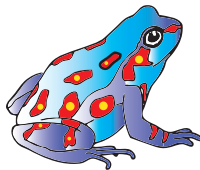
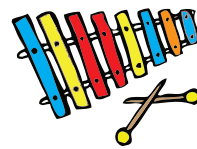
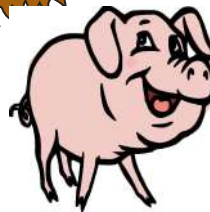
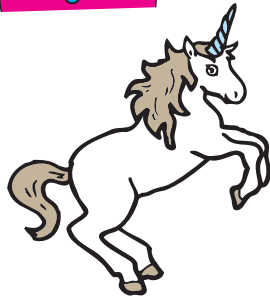
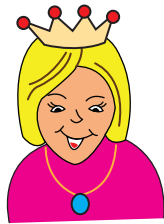
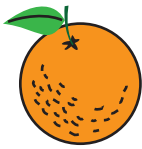
A to Z
Sound it Out
Alphabet Train
Use Beginning Sounds to Read Words
Beginning Sounds Letter Match-Up
Write the Missing Letter: Sports Fun
Write the Missing Beginning Letter
Write the Missing Letter: Parts of a House
Missing Letters: Parts of a Plant
F Detective
I Spy an S
Riddle Me This #1
Riddle Me This #2
Riddle Me This #3
Riddle Me This #4

Certificate of Completion

Want more workbooks? Join Education.com Plus to save time and money.
<http://www.education.com/education-plus/>

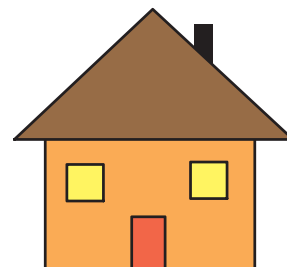
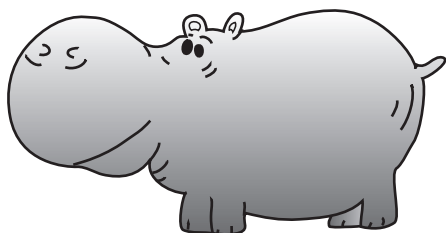
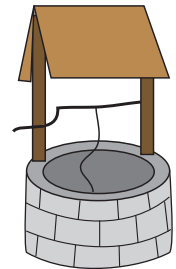
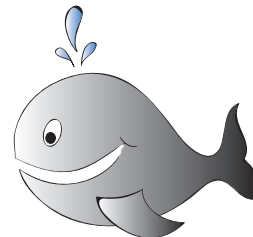
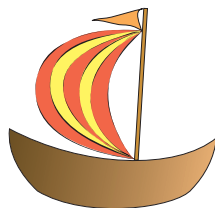
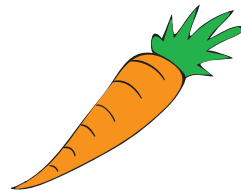
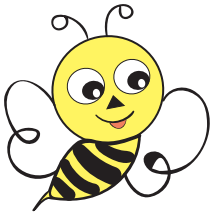
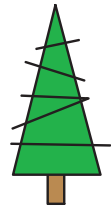
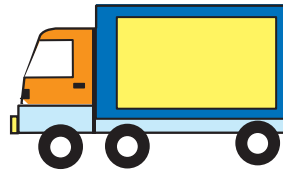
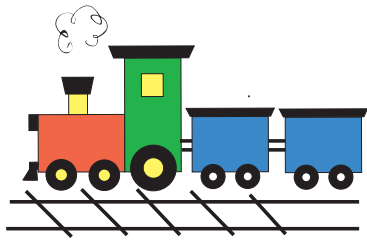
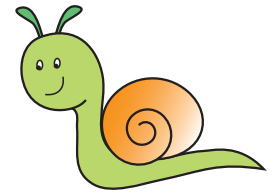
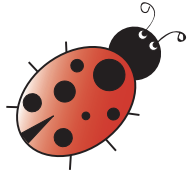
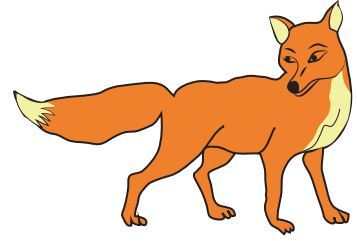
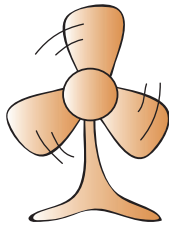
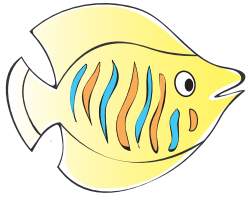
A to Z

Say the word for each picture.
What beginning sound do you hear?

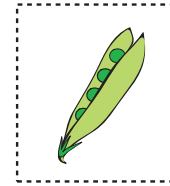
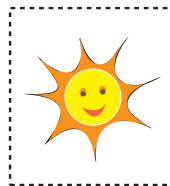
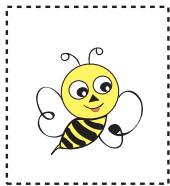
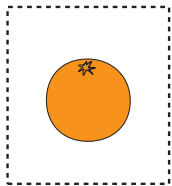
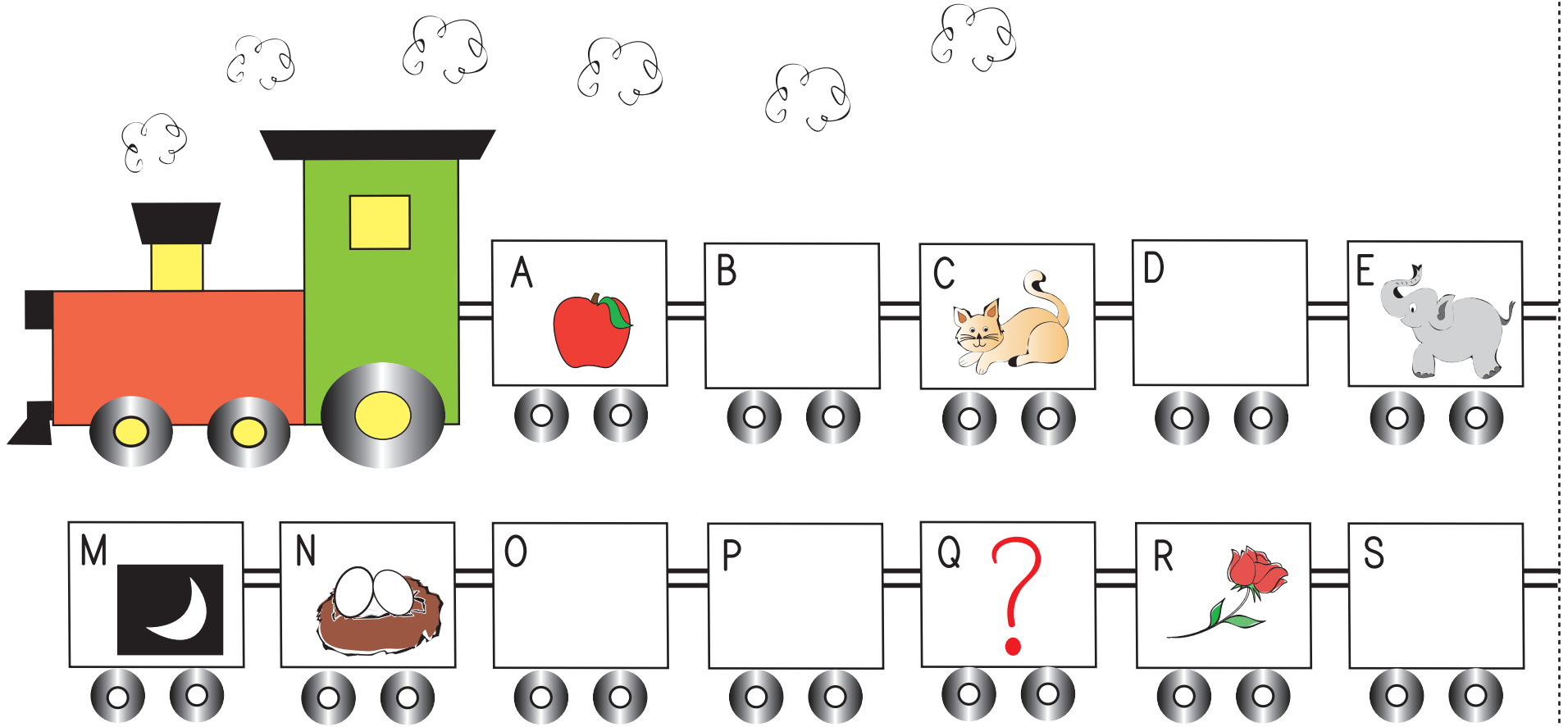


Sound it Out

Say each word. Listen to the beginning sound. One word sounds different from the others.
Can you find it?



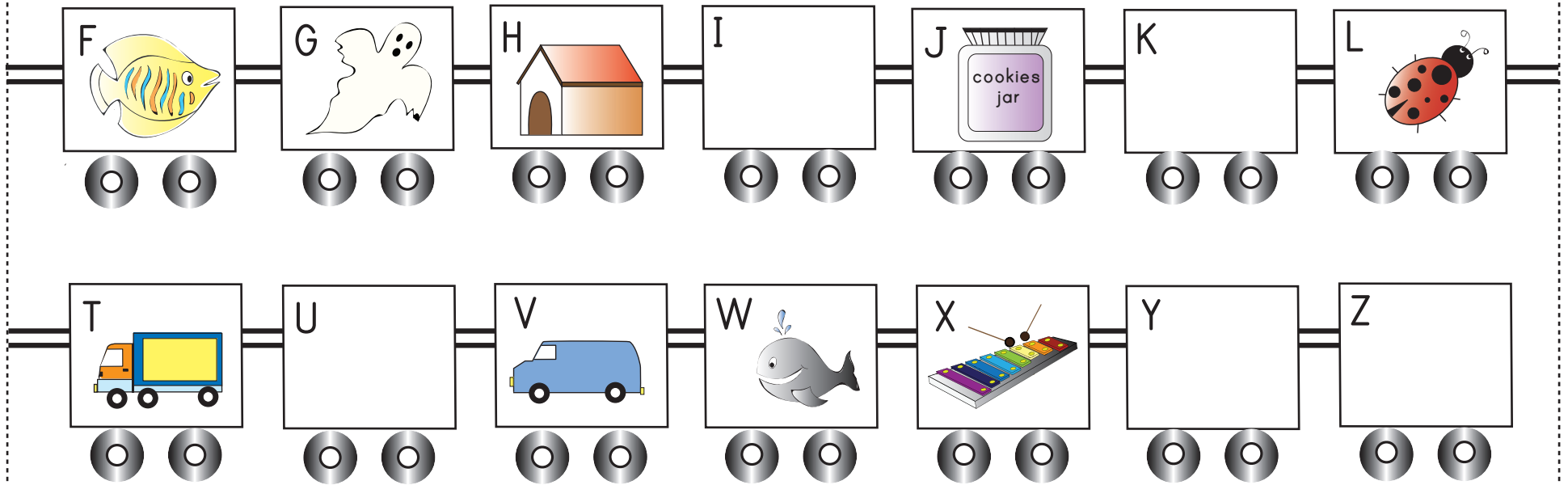
ALPHABET TRAIN



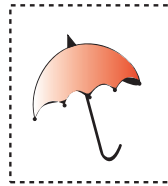
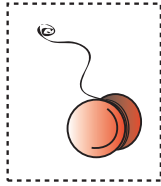
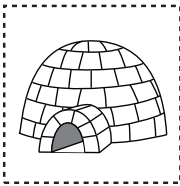
Cut along the dotted line.



Cut out the picture squares at the bottom of the page with the help of a parent. Then paste them on the train next to the correct beginning letter sound.



Paste page 1 along this dotted line.



Use Beginning Sounds to Read Words

Knowing the first sound can help you read a word. Look at the pictures below. Match the picture to the word. Use the first letter to help you!



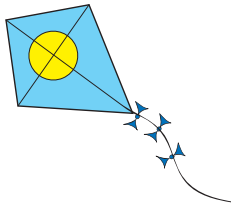
sun



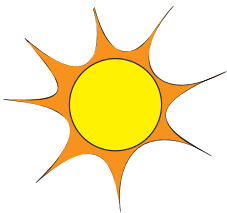
fish



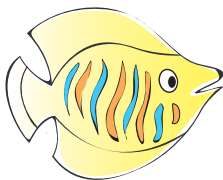
moon



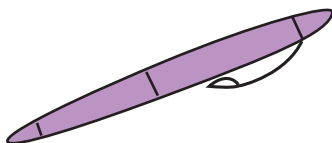
pen



book



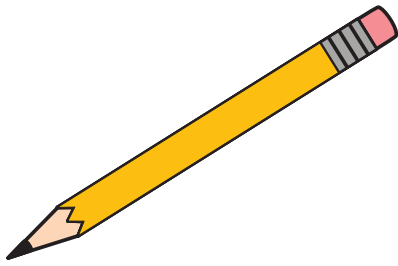
dog



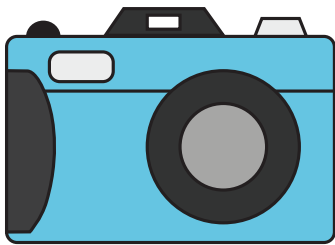
kite

BEGINNING SOUNDS

Draw a line to match each picture with the letter that makes its beginning sound.



A



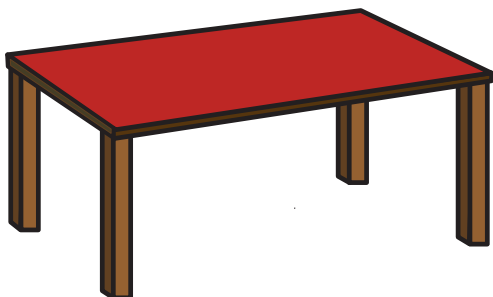
T



P



C



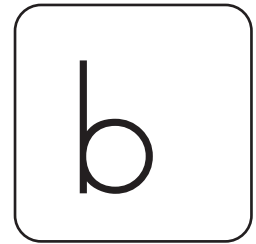
N

Sports Fun

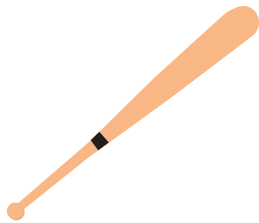
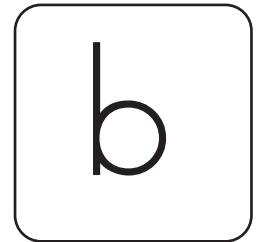
Say the name of each picture. Which letter will complete the word?
Draw a line connecting the letter to the name of each picture.
Then write the letter in the blank.



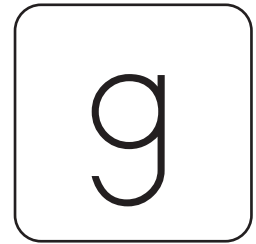
_____ at



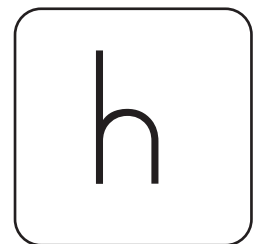
_____ rass



_____ at



_____ all

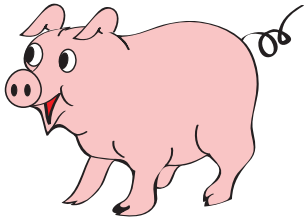


Missing Beginning Letters

Say the name of each picture. Which letter will complete the word?

Draw a line connecting the letter to the name of each picture.

Then write the letter in the blank to fill in the missing beginning letter.



_____ ig

u



_____ ee

p



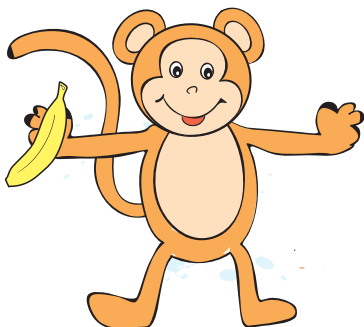
_____ up

b



_____ mbrella

m



_____ onkey

c

Beginning Letter Sound

Name the different parts of a house. Then as you say the name of each part, hear the sound and fill in the missing beginning letter.

oof

un

indow

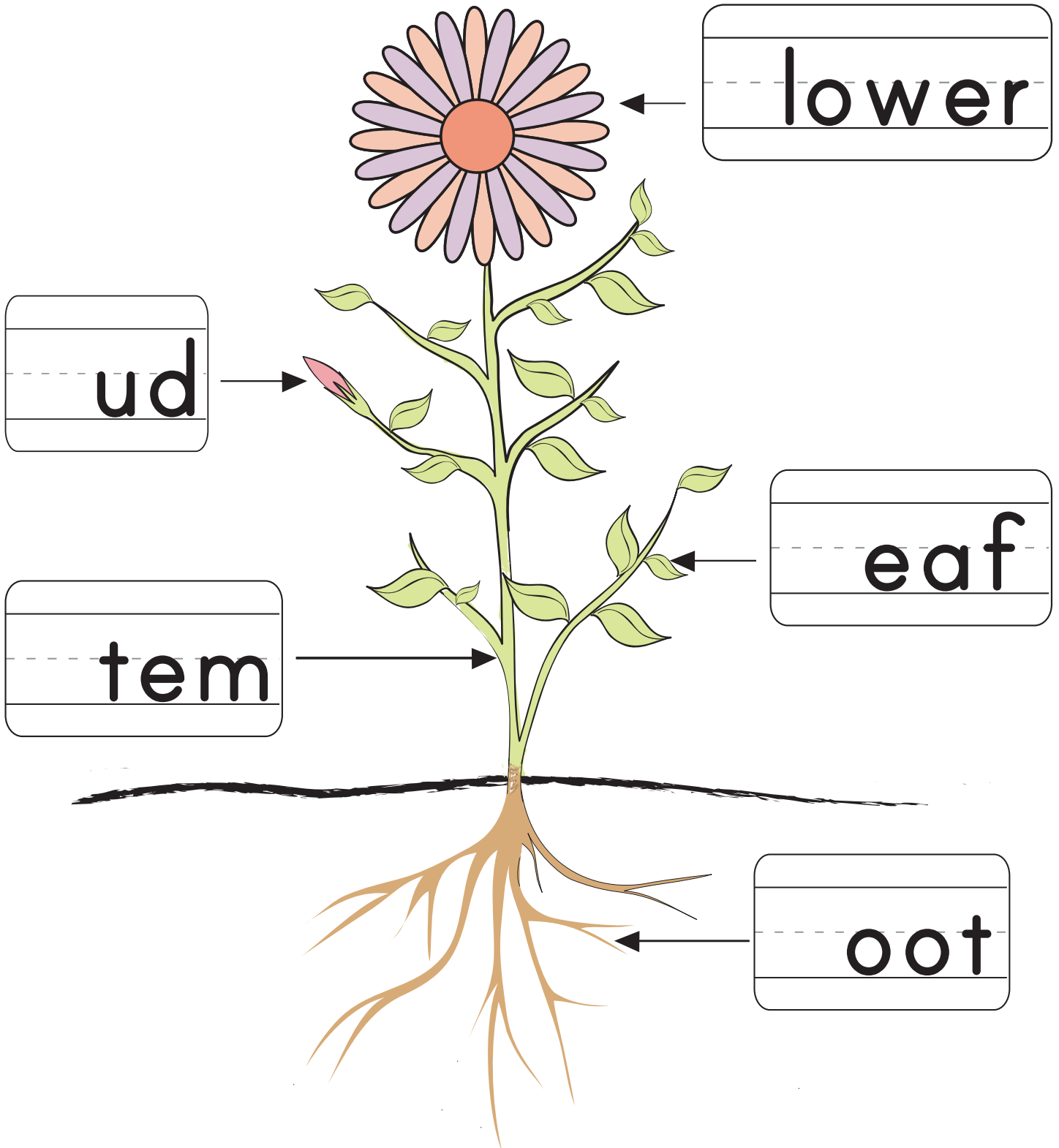
oor

ailbox

The image shows a house with a brown roof, yellow walls, a brown door, a window, a chimney, and a blue mailbox. A yellow sun is in the top right. Five word cards with missing beginning letters are connected to parts of the house by arrows: 'oof' points to the roof, 'un' points to the sun, 'indow' points to the window, 'oor' points to the door, and 'ailbox' points to the mailbox.

Beginning Letter Sound

Name the different parts of the plant first. Then as you say the name of each part, hear the sound and fill in the missing beginning letter.



F Detective

Look at the picture and say the word aloud. If the word starts with the letter F, then color that section orange. If the word does not start with the letter F, then color that section blue.



What animal did you find in the picture? _____

Clue: The name of the animal starts with the letter F.

I SPY an S

Can you find 10 things in this picture that start with an S?

Hint: Look for things that begin like 



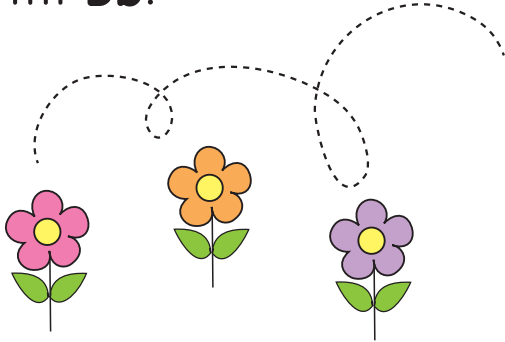
Answers: Slide, swing, seesaw, sunflower, scooter, sandbox, shovel, sandcastle, shell, soccer ball, sneaker, spider, sun.

Riddle Me This

Solve the riddle and make a sketch of your answer in the white box.

I start with **Bb**.

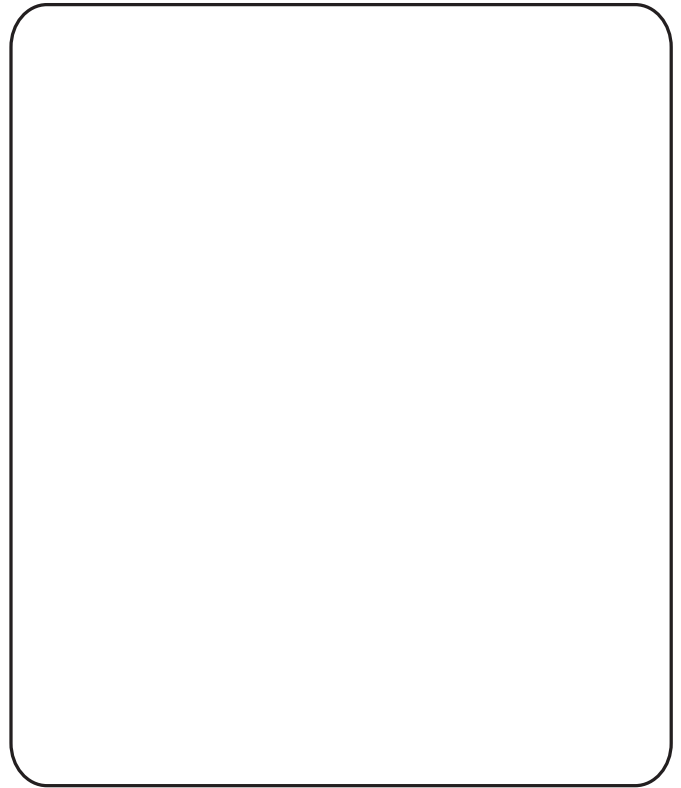
I fly.



I buzz. *Buzzzzzzzz*

I am **yellow** and **black**.

What am I ?



I start with **Ff**.

I am **red**.

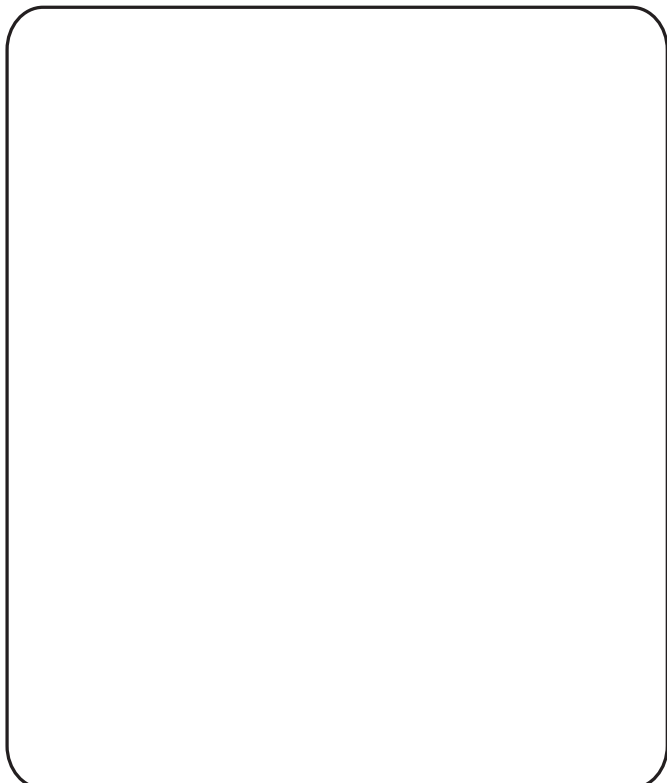
I have a loud siren.



I put out fires.



What am I ?

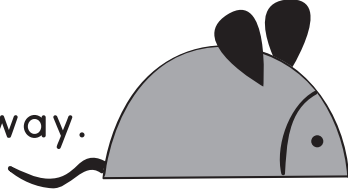


Riddle Me This

Solve the riddle and make a sketch of your answer in the white box.

I start with **Cc**.

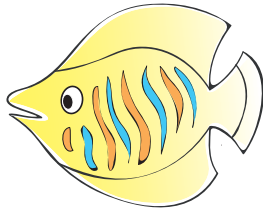
I scare mice away.



I meow.

MEOW

I like to eat fish.

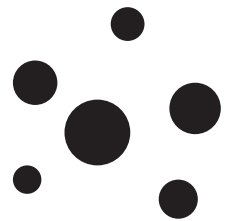


What am I ?

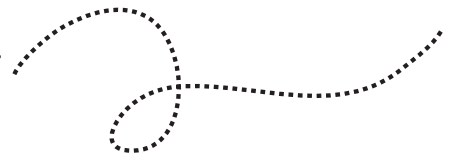
A large, empty rounded rectangle with a black border, intended for the student to draw their answer to the riddle.

I start with **Ll**.

I have black spots.



I can fly.



I am **black** and **red**.

What am I ?

A large, empty rounded rectangle with a black border, intended for the student to draw their answer to the riddle.

Riddle Me This

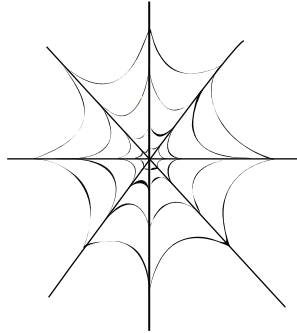
Solve the riddle and make a sketch of your answer in the white box.

I start with **Ss**.

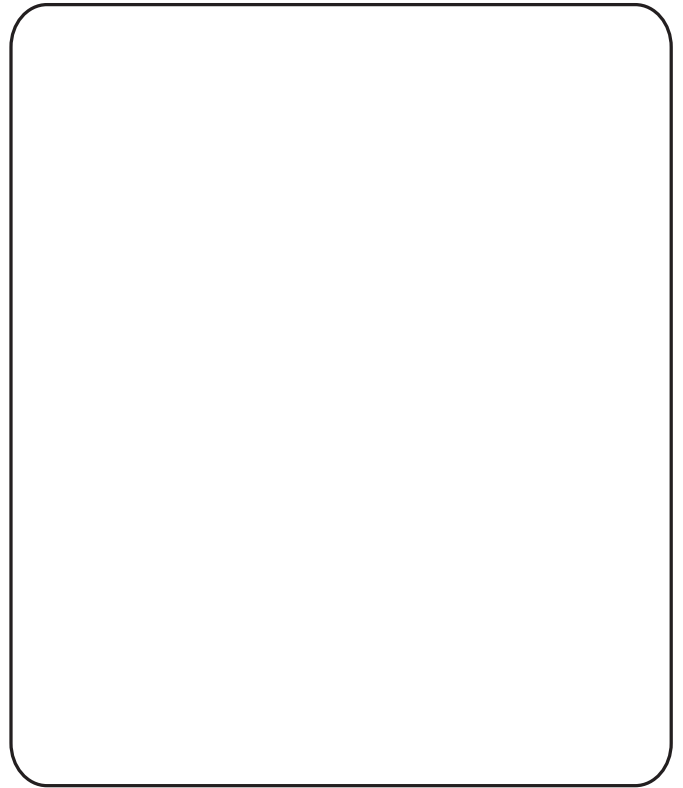
I can spin a web.

I have **8** legs.

I rhyme with the word "glider".



What am I ?



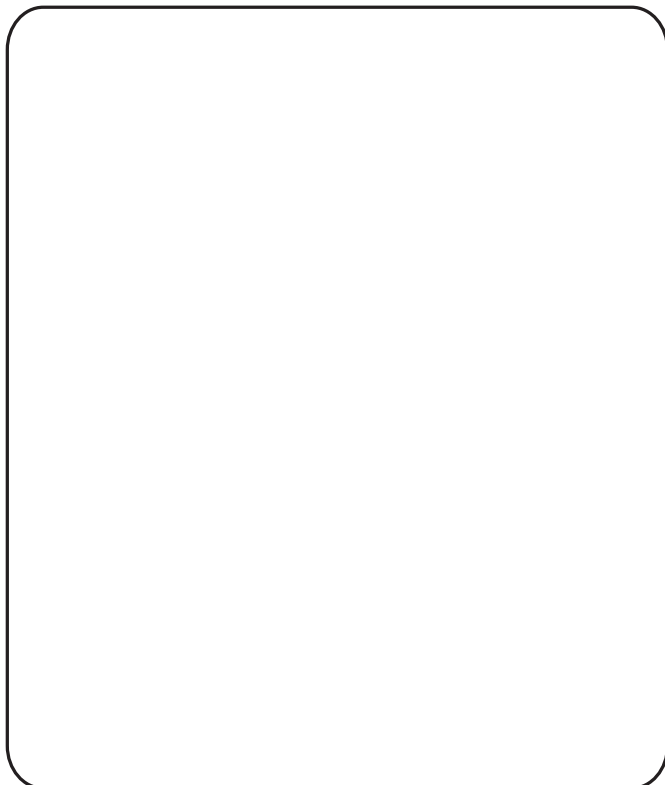
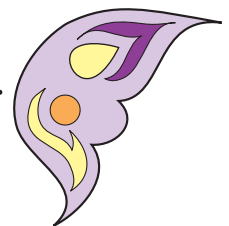
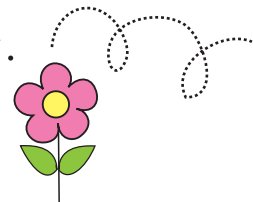
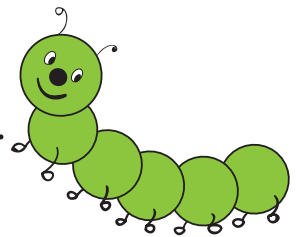
I start with **Bb**.

I was a caterpillar.

I can fly now.

I have pretty wings.

What am I ?



Riddle Me This

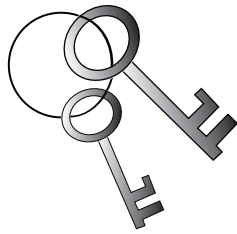
Solve the riddle and make a sketch of your answer in the white box.

I start with **Pp**.

I can make sound.



I have a lot of keys.



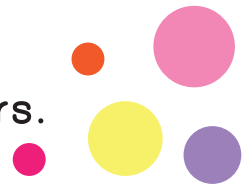
I am **black** and **white**.

What am I ?

A large, empty rectangular box with rounded corners, intended for the student to draw their answer to the riddle.

I start with **Ff**.

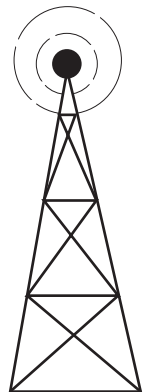
I come in many colors.



I smell good.



I rhyme with "tower".



What am I ?

A large, empty rectangular box with rounded corners, intended for the student to draw their answer to the riddle.

Great job!

is an Education.com reading superstar

